

THIS INSTRUMENT PREPARED BY
 DAVID P. LINDLEY
 OF
CAULFIELD and WHEELER, INC.
 SURVEYORS - ENGINEERS - PLANNERS
 7900 GLADES ROAD, SUITE 100
 BOCA RATON, FLORIDA 33434 - (561)392-1991
 NOVEMBER - 2014

ALTON NEIGHBORHOOD 1

BEING A REPLAT OF TRACT "C-1", ALTON PCD,
 AS RECORDED IN PLAT BOOK 118, PAGES 197 THROUGH 206, OF THE PUBLIC RECORDS OF PALM BEACH COUNTY, FLORIDA,
 LYING IN SECTION 26, TOWNSHIP 41 SOUTH, RANGE 42 EAST, CITY OF PALM BEACH GARDENS, PALM BEACH COUNTY, FLORIDA

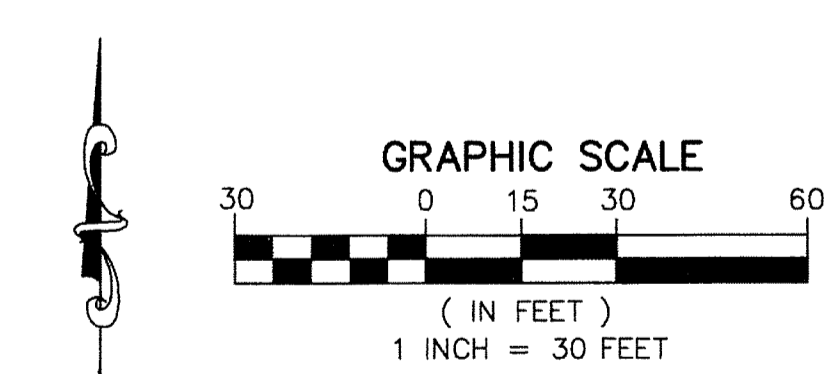
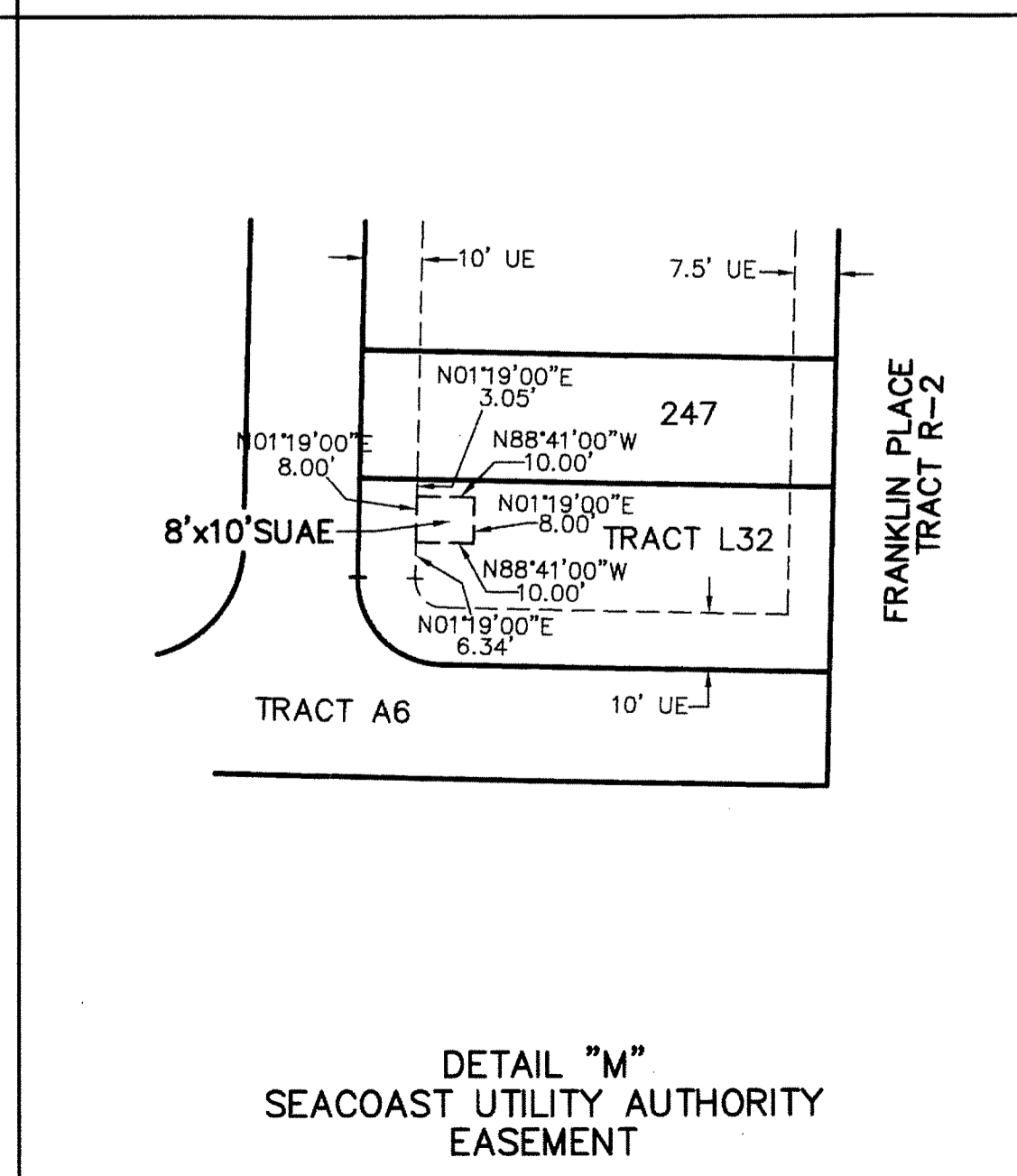
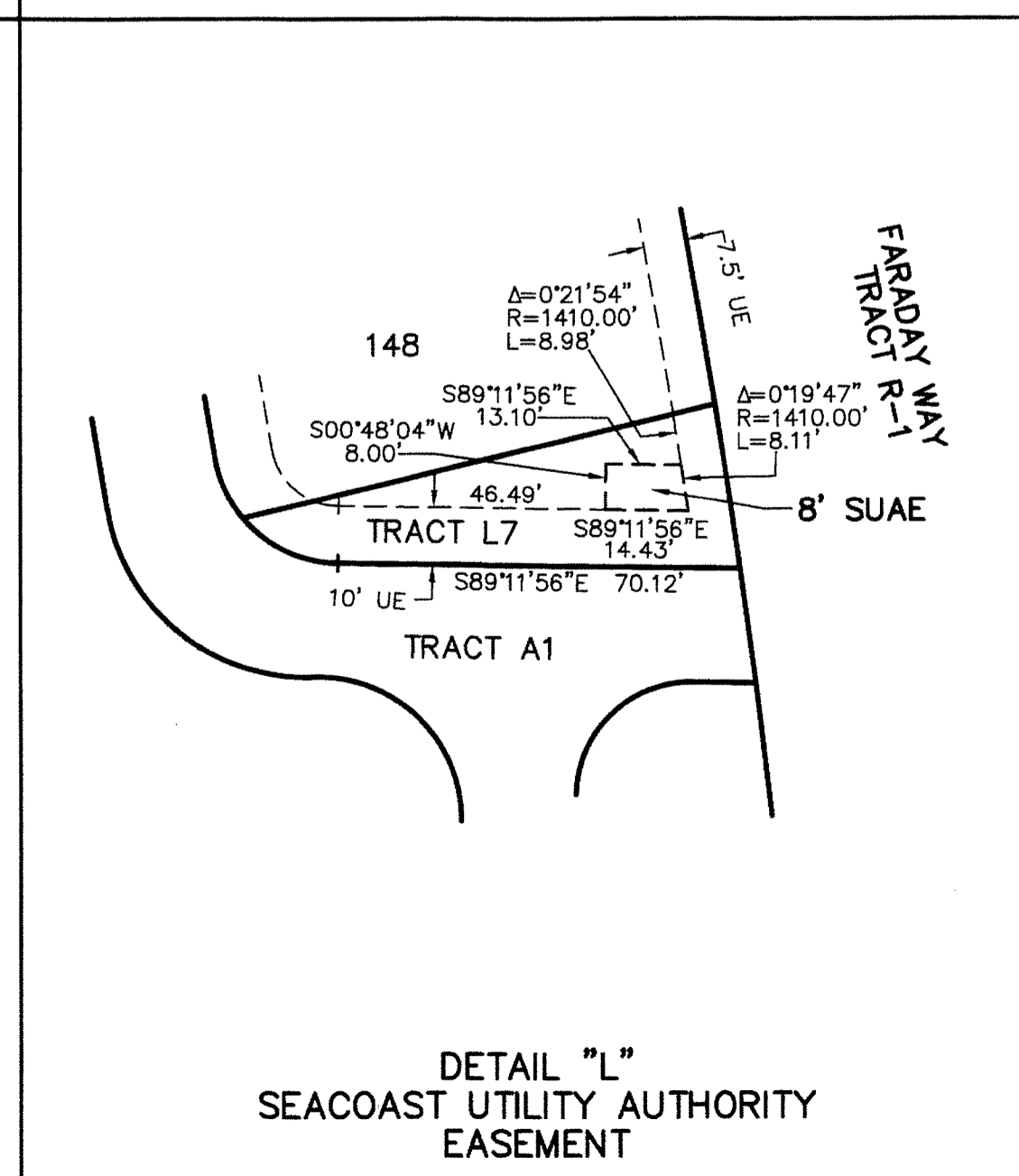
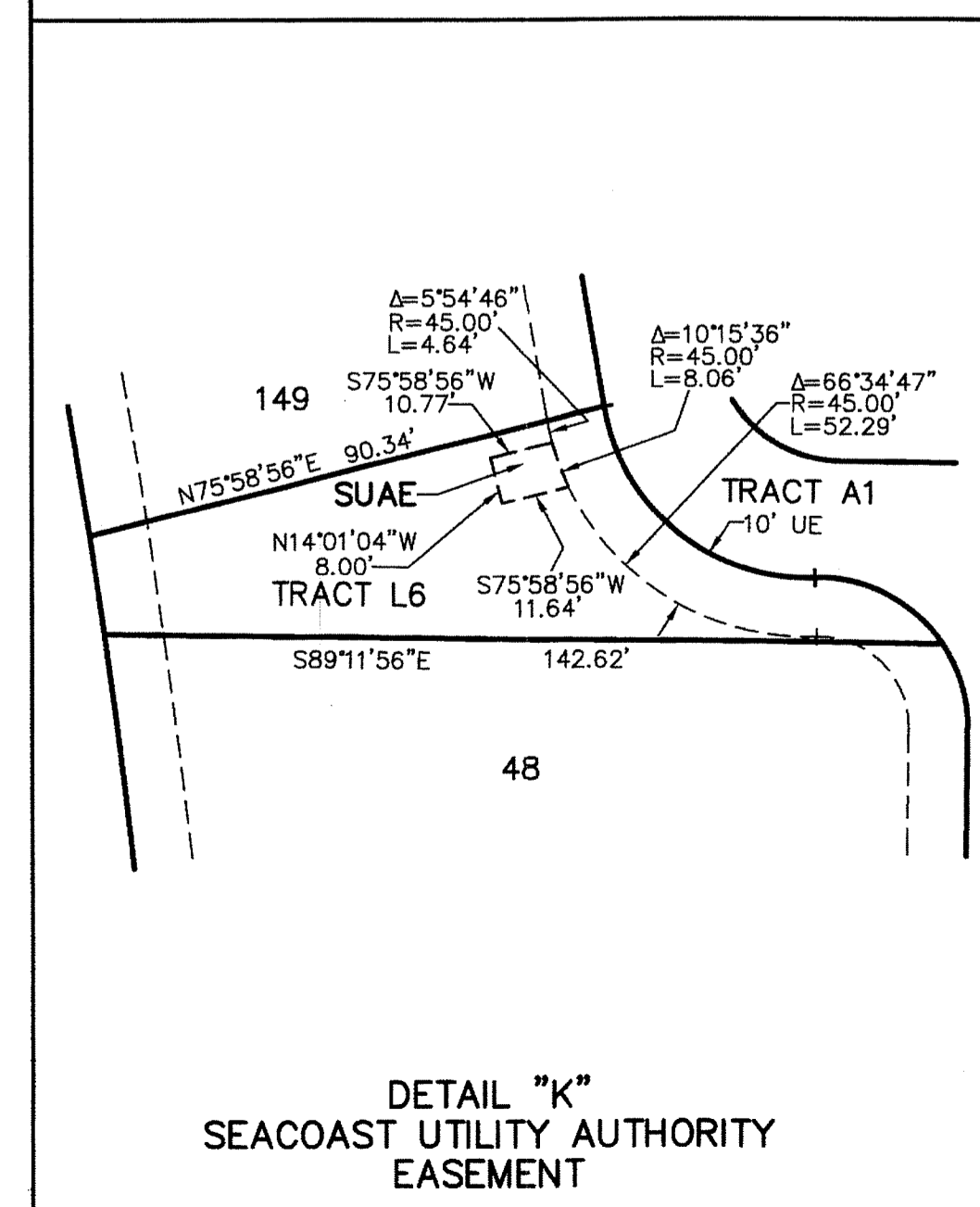
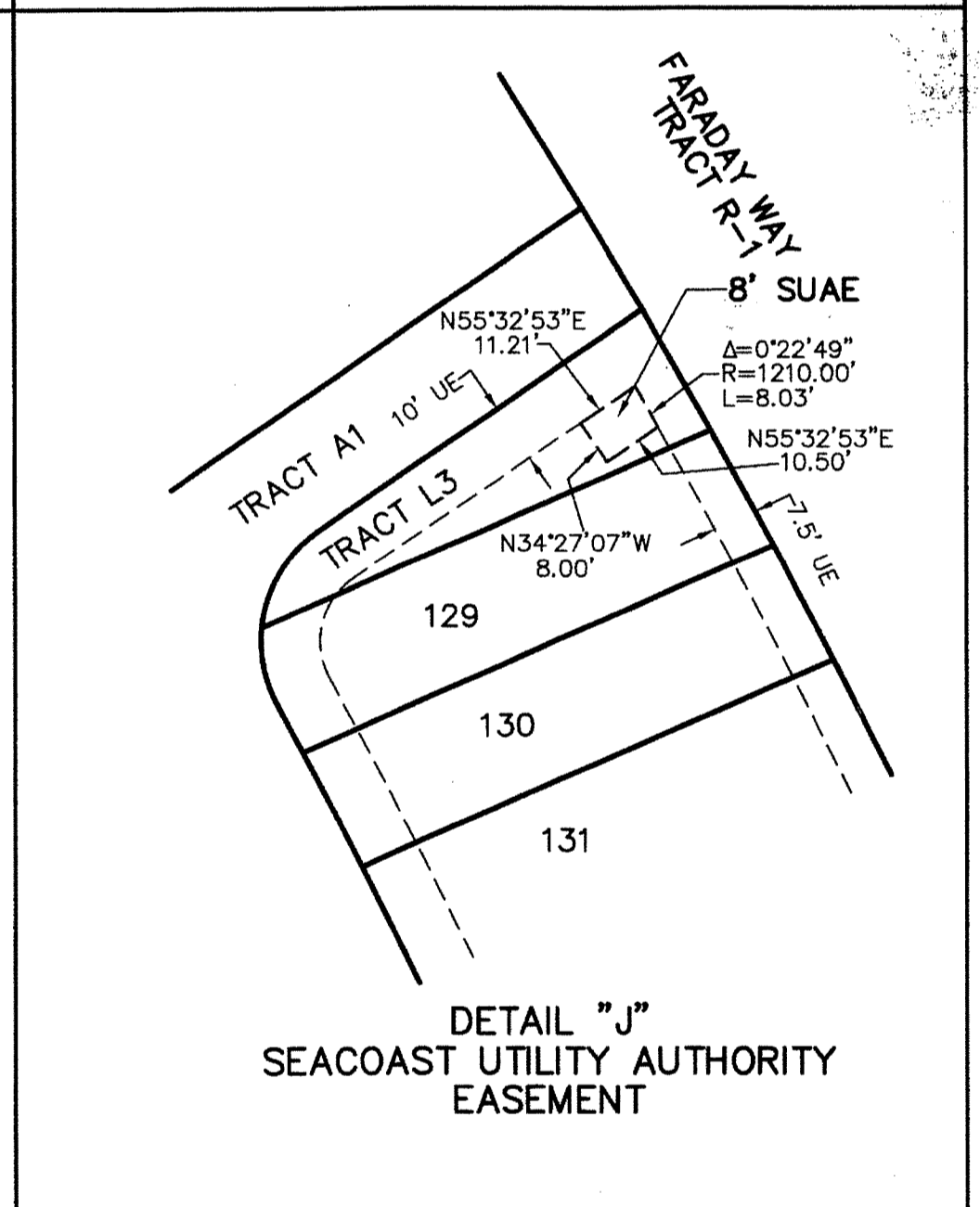
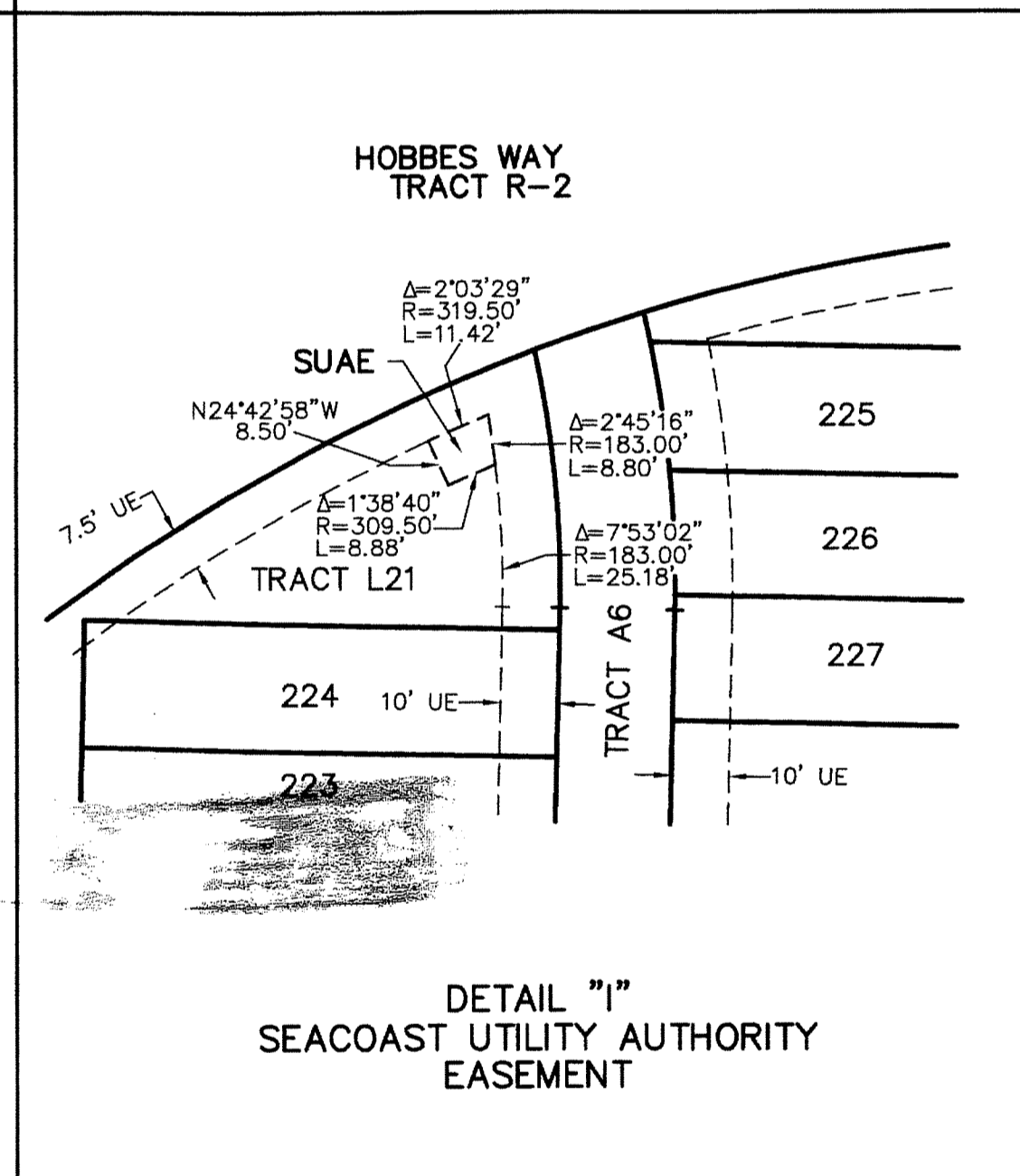
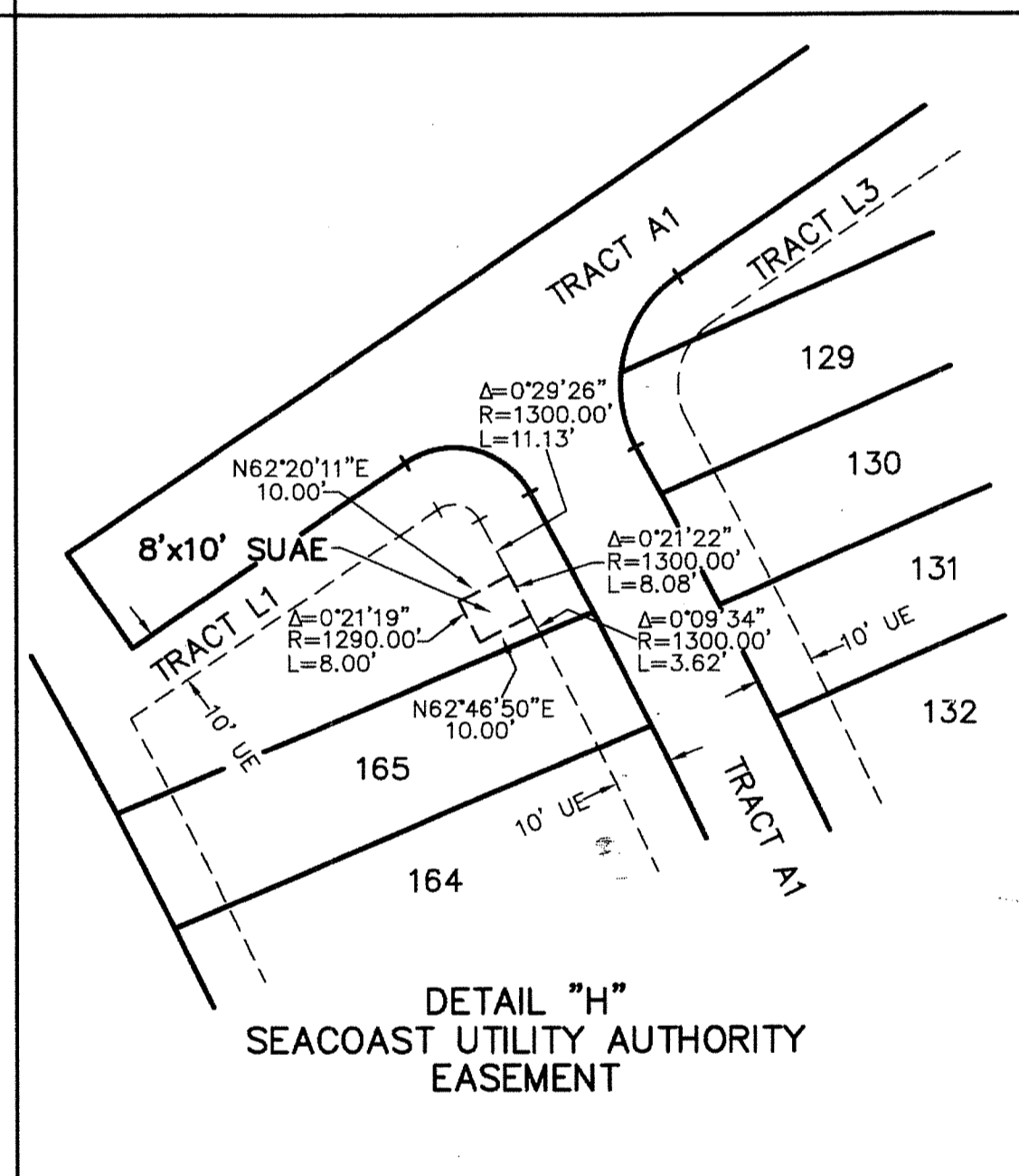
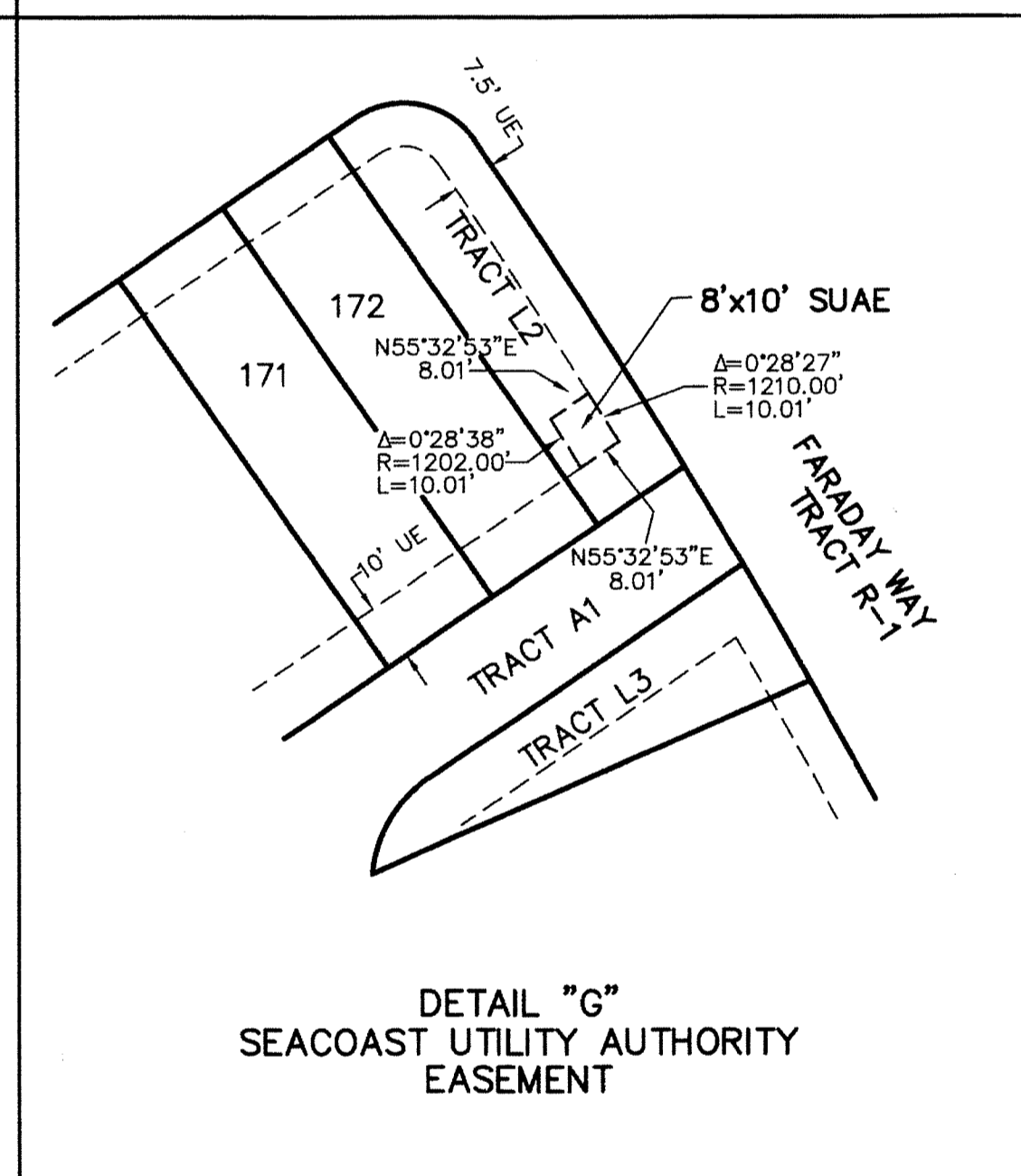
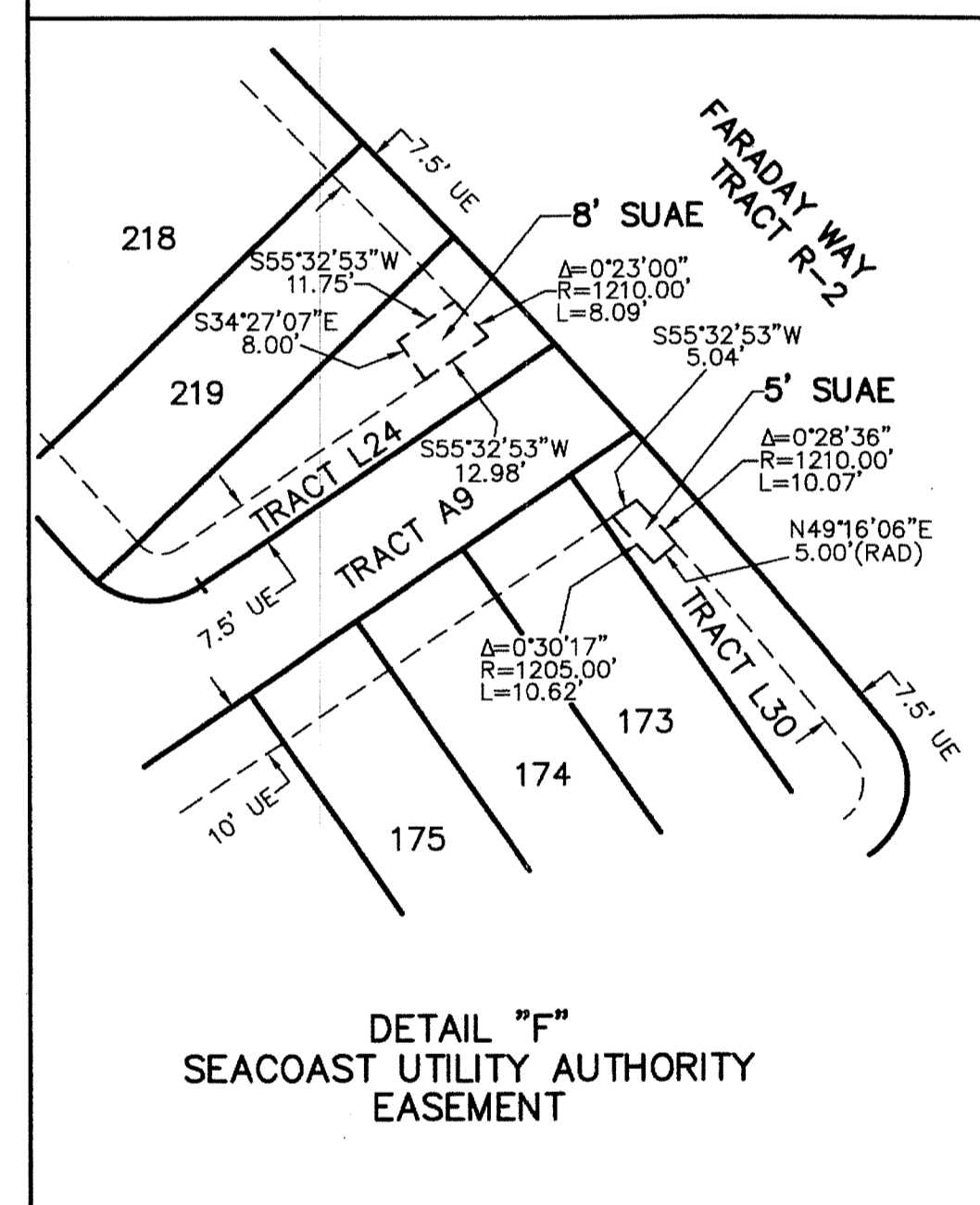
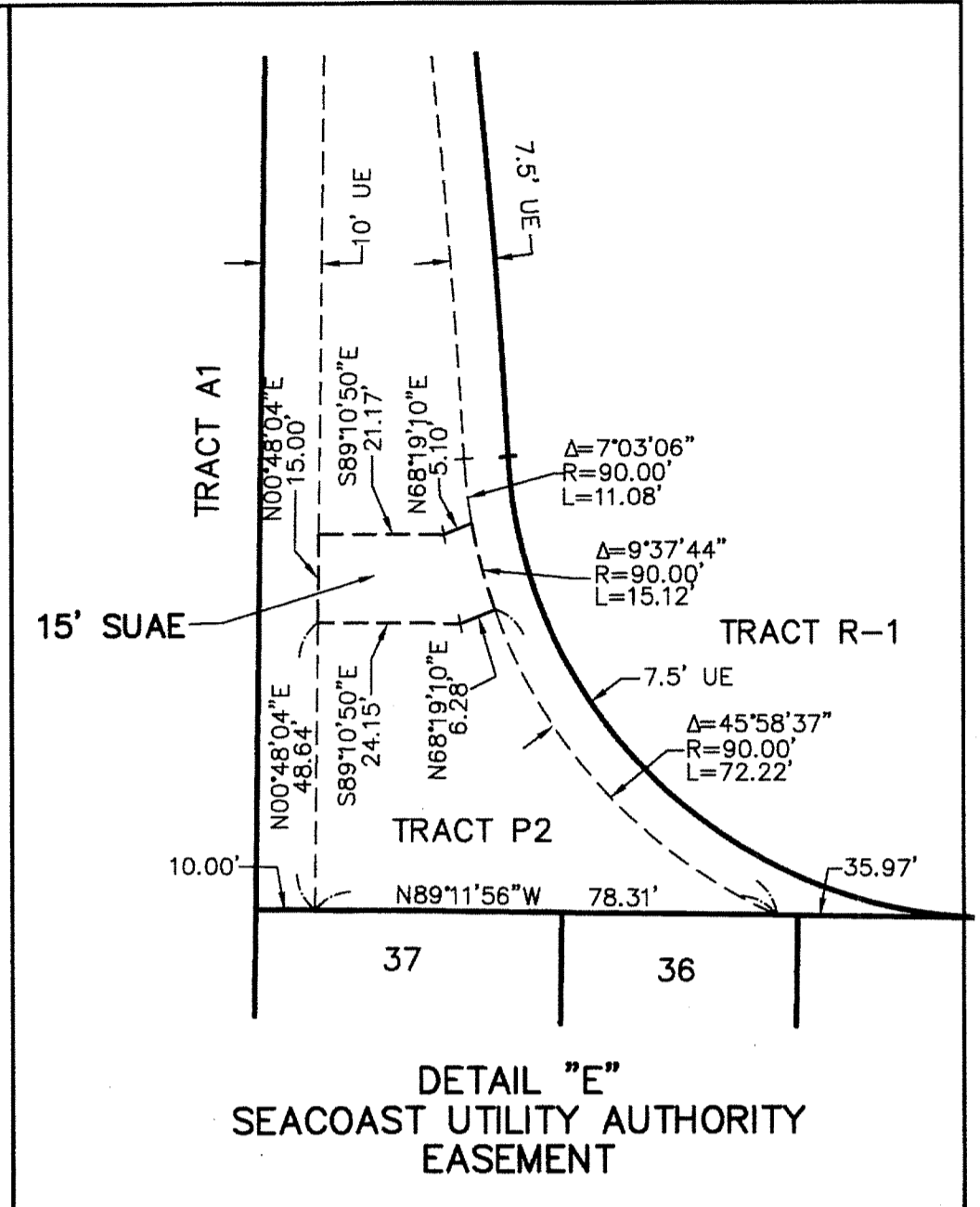
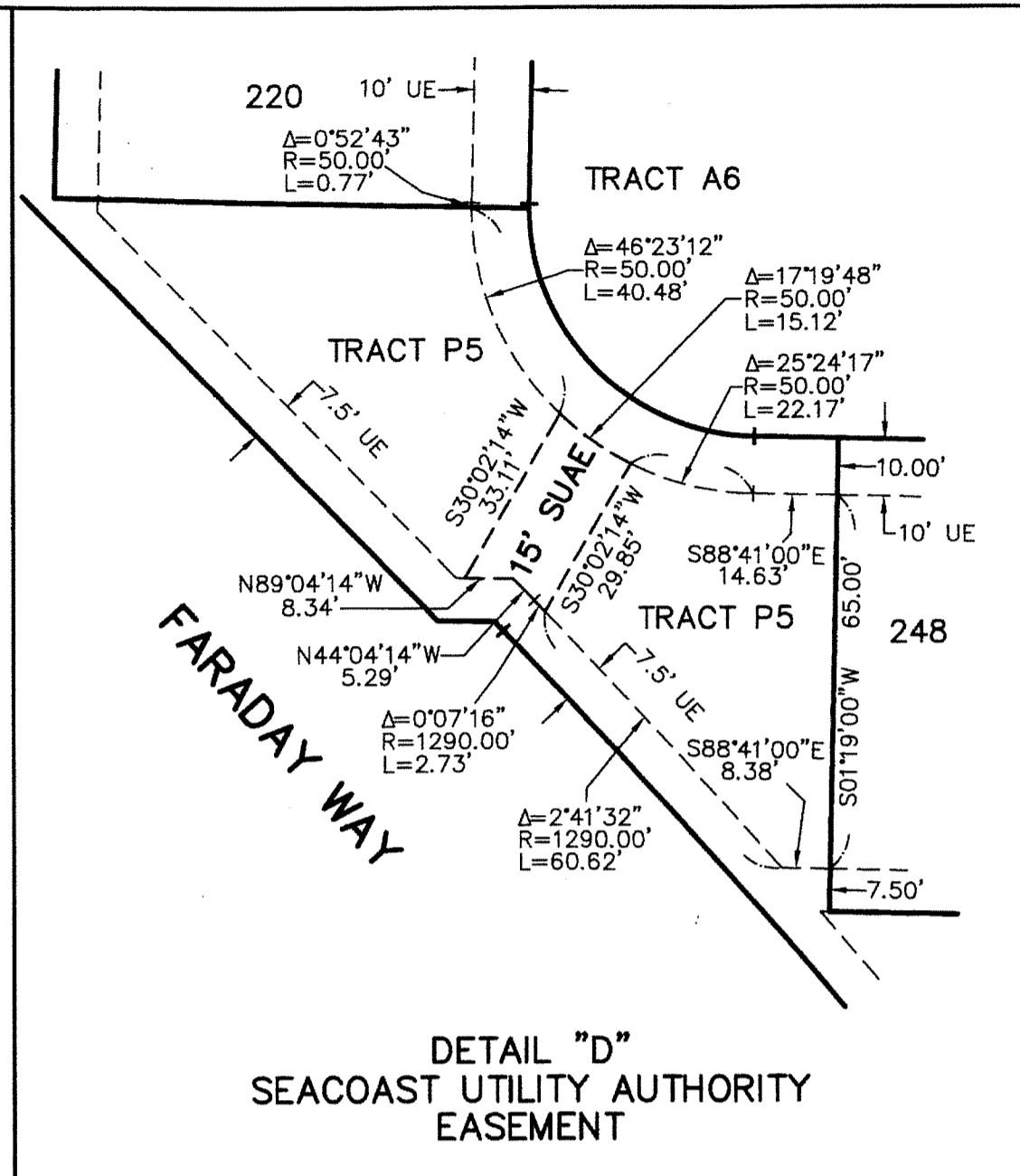
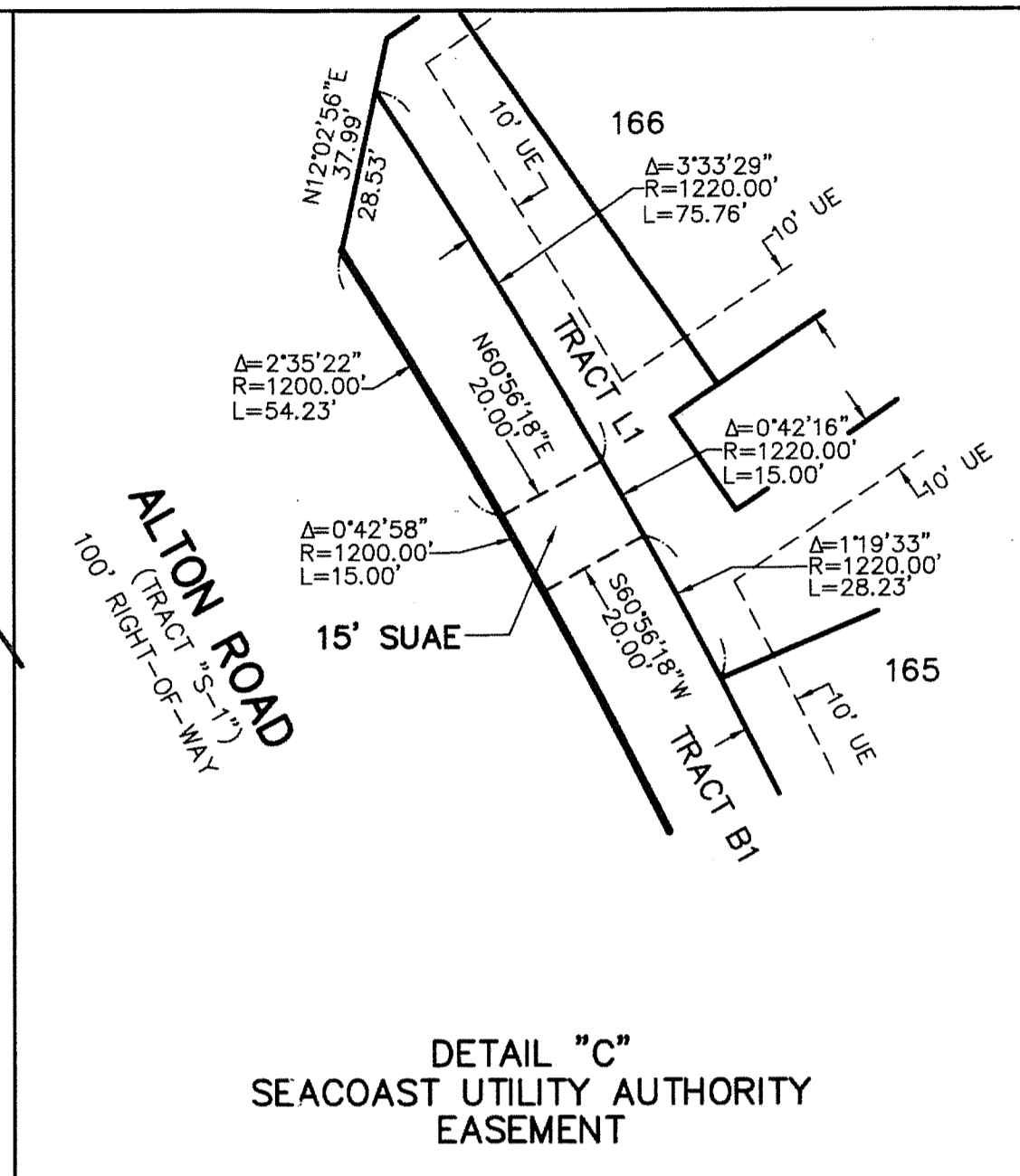
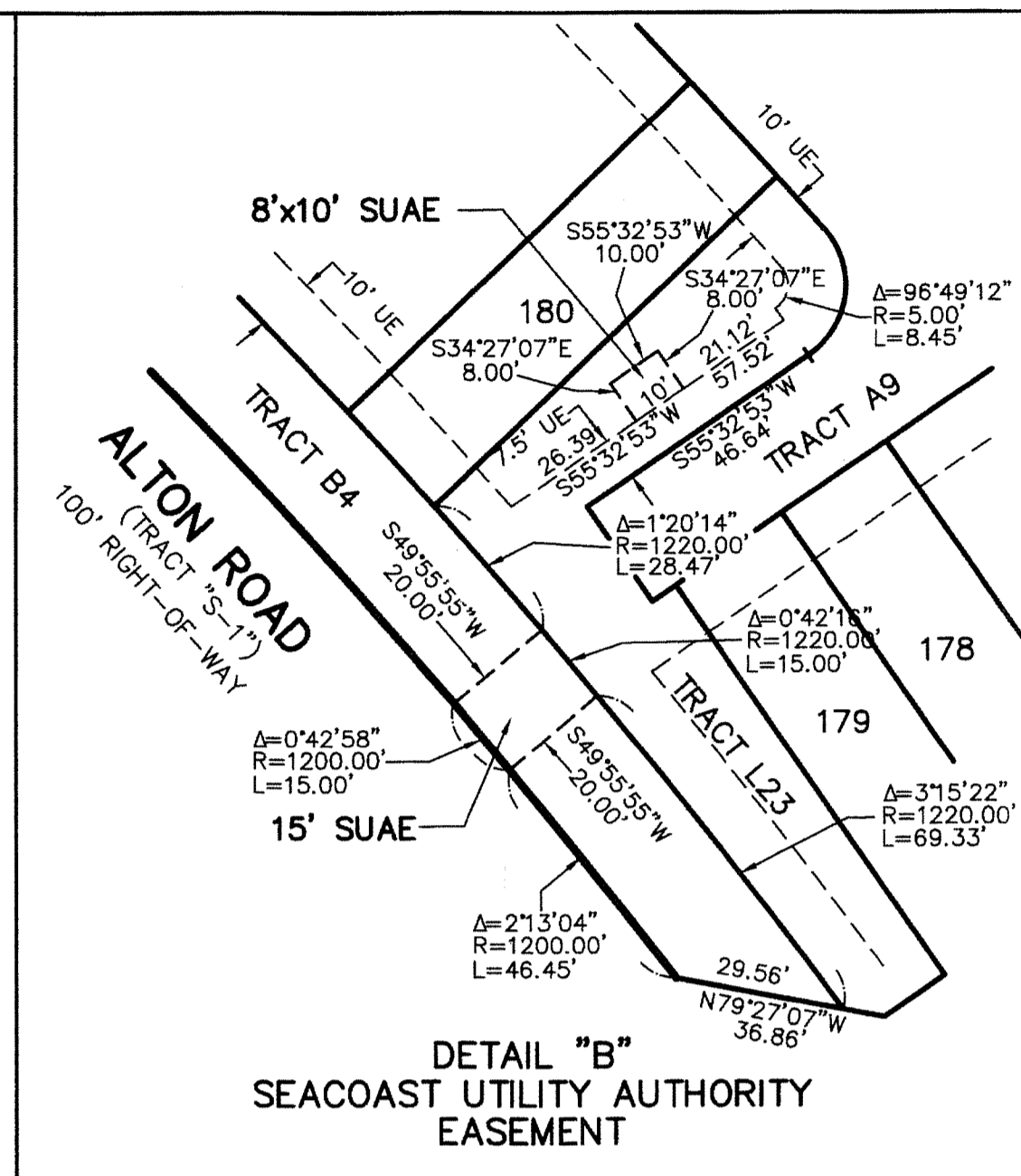
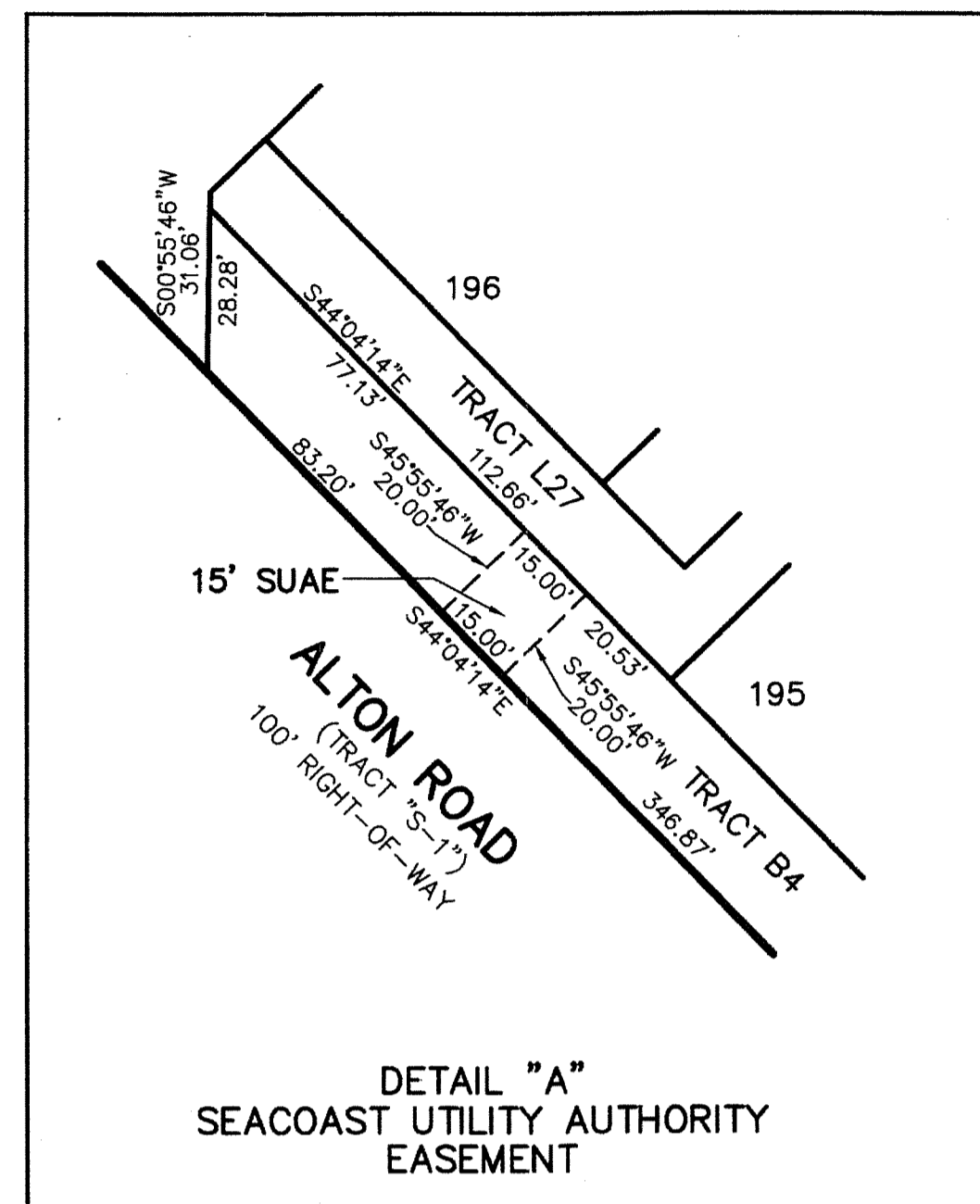
63

STATE OF FLORIDA
 COUNTY OF PALM BEACH
 THIS PLAT WAS FILED FOR
 RECORD AT _____ M.
 THIS _____ DAY OF _____
 A.D. 20____ AND DULY RECORDED
 IN PLAT BOOK _____ ON
 PAGES _____ AND _____

SHARON R. BOCK
 CLERK AND COMPTROLLER

BY: _____
 DEPUTY CLERK

SHEET 13 OF 13



- LEGEND/ABBREVIATIONS**
- ⊙ - CENTERLINE
 - Δ - DELTA (CENTRAL ANGLE)
 - FSE - FIRE SAFETY EASEMENT
 - CB - CHORD BEARING
 - CD - CHORD DISTANCE
 - L - ARC LENGTH
 - LB - LICENSED BUSINESS
 - LBWE - LANDSCAPE BUFFER WALL EASEMENT
 - NPBCID - NORTHERN PALM BEACH COUNTY IMPROVEMENT DISTRICT
 - O.R.B. - OFFICIAL RECORD BOOK
 - R - RADIUS
 - (RAD) - INDICATES RADIAL LINE
 - RBE - ROADWAY BUFFER EASEMENT
 - SUAUE - SEACOAST UTILITY AUTHORITY EASEMENT
 - UE - UTILITY EASEMENT
 - PRM - DENOTES PERMANENT REFERENCE MONUMENT
 - 4" x 4" x 24" CONCRETE MONUMENT WITH ALUMINUM DISK STAMPED "PRM LB3591"
 - PCP - DENOTES PERMANENT CONTROL POINT
 - NAIL AND METAL DISK STAMPED "PCP LB3591"

